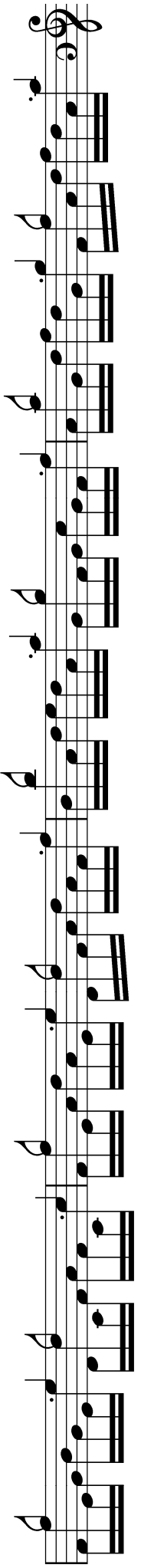


Jörg Gedan

10 ROMANTISCHE PRÉLUDES
für Klavier



ZEHN ROMANTISCHE PRÉLUDES

Jörg Gedan

Allegro

The image displays the first ten measures of a piano prelude. The score is written for piano in common time (C) and features a dynamic range from mezzo-forte (mf) to crescendo (cresc.).

Measure 1: Starts with a mezzo-forte (mf) dynamic. The right hand plays a series of eighth-note chords, while the left hand plays a steady eighth-note bass line. A first ending bracket labeled '1' spans the first three measures. The left hand has a '2' under the first measure and a '3' under the third measure.

Measure 4: The right hand continues with eighth-note chords, and the left hand has a '3' under the third measure.

Measure 7: The right hand has a 'mf' dynamic marking. It features a first ending bracket labeled '5 4 2' over the final three measures. The left hand has a '2' under the second measure and a '3' under the third measure.

Measure 10: The right hand begins with a crescendo (cresc.) dynamic. The left hand has a '3' under the third measure.

13 *f* *decresc.*

16 *mp*

19

2 *Andante* *p*

7 *dolce* *p* *poco cresc.*

12

4 5 4 5

1.

17

5 5 4 5 4 5

3

p

22

3 2 5 1 1 1

1 1 1 2 2

27

4

cresc.

31

morendo